



D4.4

PROTOTYPE REFINED AFTER 1ST USER TEST AND FURTHER PLATFORM FOR USER TEST 2ND ITERATION

June 2014

ABSTRACT

This document describes the “Pervasive Games Platform” available for user test (2nd iteration). The description includes the architecture of the platform and the supplied Specific Enablers. Moreover, a roadmap briefly points out Enablers in upcoming releases of the “Pervasive Games Platform” and a brief discussion outlines the deployment of Enablers and the technical infrastructure available for the second experimentation cycle at the experimentation sites.

This document is a deliverable of the FI-CONTENT 2 integrated project supported by the European Commission under its FP7 research funding programme, and contributes to the FI-PPP (Future Internet Public Private Partnership) initiative.



DISCLAIMER

All intellectual property rights are owned by the FI-CONTENT2 consortium members and are protected by the applicable laws. Except where otherwise specified, all document contents are: “© FI-CONTENT2 project - All rights reserved”. Reproduction is not authorised without prior written agreement.

All FI-CONTENT2 consortium members have agreed to full publication of this document.

All FI-CONTENT2 consortium members are also committed to publish accurate and up to date information and take the greatest care to do so. However, the FI-CONTENT2 consortium members cannot accept liability for any inaccuracies or omissions nor do they accept liability for any direct, indirect, special, consequential or other losses or damages of any kind arising out of the use of this information.

DELIVERABLE DETAILS

[Full project title]:	Future media Internet for large-scale CONTENT experimentATION 2
[Short project title]:	FI-CONTENT 2
[Contract number]:	603662
[WP n°]:	WP4: Games platform
[WP leader]:	Bob Sumner, DISNEY ZURICH
[Deliverable n°]:	D4.4
[Deliverable title]:	Prototype refined after 1st user test and further platform for user test 2nd iteration
[Deliverable nature]:	Prototype (P)
[Dissemination level]:	Public (PU)
[Contractual delivery date]:	M15 - June 2014
[Actual delivery date]:	4/07/2014
[Editor]:	Marcel Lancelle, ETHZ
[Internal Reviewers]:	Marc Aguilar, I2CAT / Gioacchino Noris (GOBO)
[Suggested readers]:	Executives in entertainment companies and game studios, investors
[Keywords]:	Platform, Reality Mixer, Augmented Reality, Game Content, Games with Things
[File name]:	FI-CONTENT2_WP4-006_D4.4_V1.0.docx

EXECUTIVE SUMMARY

The “Pervasive Games Platform” consists of a number of Specific Enablers that are relevant for games on mobile devices with a focus on Augmented Reality applications and social interaction. This document describes the 2nd release of the prototype of the platform after an initial release, experimentation and feedback integration cycle. Many updates were already integrated in the resubmitted D4.2.

With the goal to enhance development of such games we have a categorization of three tiers to reflect different technical challenges for a number of scenarios: Tier 1 is for small scale indoor settings including marker tracking and toy tracking applications. Tier 2 consists of location based games where the players will be able to play a game at certain prepared locations, usually adapted to the special setting of that location. With city-wide games, Tier 3 has the technically most challenging scenarios where tracking and localization need to work without control of the environment.

Improvements to existing Specific Enablers were made for the Tier 1 and Tier 2 scenarios. Specific Enablers tailored to the Tier 3 scenario are still in an early stage and integration with the work of the new partners is ongoing.

We grouped our Specific Enablers according to the portfolio of a dedicated feature set. For instance, the SEs in the Reality Mixer group improve the augmentation of real content with virtual ones to achieve seamless integration and the Enablers in the Augmented Reality group focus on visual tracking algorithms.

The following Enablers are provided in the first and second releases of the platform:

- The **Reality Mixer - Reflection Mapping SE** takes environmental lighting into account.
- The **Reality Mixer - Camera Artifact Rendering SE** applies effects to computer generated content to mimic the behavior of the device’s camera and enhance the integration.
- With the **Leaderboard SE**, high scores can be submitted and retrieved.
- The **Augmented Reality - Marker Tracking SE** is used for 2D-marker tracking.
- The **Augmented Reality - Fast Feature Tracking SE** provides efficient markerless 2D-feature tracking.
- The **Game Synchronization SE** provides a simplified way to ensure that all game objects and properties have the same state on all devices.
- The **Geospatial – POI Matchmaking SE** (formerly: Spatial Matchmaking SE) helps to find other players ready for a game in the vicinity.
- The **Geospatial – POI Interface SE** provides a set of commonly used functions to interface and access the POI data.
- The **Networked Virtual Character SE** helps to synchronize the sequence of motions across multiple clients.
- The **3D-Map Tiles SE** is a tile server for 3D data in a map context.
- The **POI Storage SE** is a lightweight implementation for points of interest.
- The **Social Network SE** provides an implementation of a social platform.

For the next releases of the platform the following Specific Enablers are planned:

- The **Reality Mixer - Simulation Continuum SE** includes development of methods for achieving a simulation continuum between real and virtual objects
- The **Reality Mixer - Augmented Audio SE** will improve immersion by adding correctly located sound effects.
- The **Augmented Reality - Image Marker Tracking SE** will be used for natural feature tracking of predefined images.

Further Specific Enablers will be developed by the new partners from the Open Call. Those SEs will be described in more detail in D4.4.2, D4.4.3 and D4.4.4.

LIST OF AUTHORS

Organisation	Author
The Walt Disney Company Ltd	Kenny Mitchell
ETH Zurich	Marcel Lancelle Fabio Zünd
Disney Research Zurich	Chino Noris Mattia Ryffel
DFKI	Stefan Lemme Philipp Slusallek
Studio Gobo	Jim Callin

TABLE OF CONTENTS

EXECUTIVE SUMMARY	3#
LIST OF AUTHORS	4#
TABLE OF CONTENTS	5#
LIST OF FIGURES	8#
ABBREVIATIONS	9#
1 - INTRODUCTION	10#
1.1 - Overview	10#
1.2 - Terminology	10#
2 - PERVASIVE GAMES PLATFORM ARCHITECTURE	12#
2.1 - Architecture Description	13#
2.1.1 - <i>Augmented Reality</i>	13#
2.1.2 - <i>Reality Mixer</i>	13#
2.1.3 - <i>Geospatial</i>	14#
2.1.4 - <i>Game Social Platform</i>	14#
2.1.5 - <i>Games Content</i>	15#
2.2 - Specific Enablers	15#
2.3 - Generic Enablers	15#
2.4 - External Game Development Tools	16#
2.4.1 - <i>Unity3D</i>	16#
2.4.2 - <i>SmartFoxServer</i>	16#
3 - PERVASIVE GAMES PLATFORM - RELEASE 06/14	17#
3.1 - Networked Virtual Character [NEW]	17#
3.1.1 - <i>What you get</i>	17#
3.1.2 - <i>Why to get it</i>	17#
3.1.3 - <i>Documentation</i>	17#
3.2 - Geospatial - POI Interface [NEW]	17#
3.2.1 - <i>What you get</i>	17#
3.2.2 - <i>Why to get it</i>	18#
3.2.3 - <i>Documentation</i>	18#
3.3 - Geospatial - POI Matchmaking [NEW]	18#
3.3.1 - <i>What you get</i>	18#
3.3.2 - <i>Why to get it</i>	18#
3.3.3 - <i>Documentation</i>	18#
3.4 - Reality Mixer - Reflection Mapping	18#
3.4.1 - <i>What you get</i>	18#

3.4.2 - <i>Why to get it</i>	18#
3.4.3 - <i>Documentation</i>	18#
3.5 - Reality Mixer - Camera Artifact Rendering	19#
3.5.1 - <i>What you get</i>	19#
3.5.2 - <i>Why to get it</i>	19#
3.5.3 - <i>Documentation</i>	19#
3.6 - Leaderboard	19#
3.6.1 - <i>What you get</i>	19#
3.6.2 - <i>Why to get it</i>	19#
3.6.3 - <i>Documentation</i>	19#
3.7 - Augmented Reality - Fast Feature Tracking	19#
3.7.1 - <i>What you get</i>	19#
3.7.2 - <i>Why to get it</i>	19#
3.7.3 - <i>Documentation</i>	20#
3.8 - Augmented Reality - Marker Tracking	20#
3.8.1 - <i>What you get</i>	20#
3.8.2 - <i>Why to get it</i>	20#
3.8.3 - <i>Documentation</i>	20#
3.9 - Game Synchronization	20#
3.9.1 - <i>What you get</i>	20#
3.9.2 - <i>Why to get it</i>	20#
3.9.3 - <i>Documentation</i>	21#
3.10 - 3D-Map Tiles [NEW]	21#
3.10.1 - <i>What you get</i>	21#
3.10.2 - <i>Why to get it</i>	21#
3.10.3 - <i>Documentation</i>	21#
3.11 - POI Storage [NEW]	21#
3.11.1 - <i>What you get</i>	21#
3.11.2 - <i>Why to get it</i>	21#
3.11.3 - <i>Documentation</i>	21#
3.12 - Social Network	22#
3.12.1 - <i>What you get</i>	22#
3.12.2 - <i>Why to get it</i>	22#
3.12.3 - <i>Documentation</i>	22#
4 - PERSVASIVE GAMES PLATFORM APPLICATION PROTOTYPES	23#
5 - INTERACTION AND COOPERATION WITH OTHERS FICONTENT PLATFORMS.....	26#
6 - PERSVASIVE GAMES PLATFORM - UPCOMING RELEASES	27#
6.1 - Reality Mixer - Augmented Audio	27#

6.2 - Augmented Reality - Image Marker Tracking.....	27#
6.3 - Reality Mixer - Simulation Continuum.....	27#
6.4 - New SEs and new prototypes by Open Call partners	27#
6.5 - Other Previously Planned Enablers	27#
6.5.1 - Game Server.....	27#
6.5.2 - Augmented Reality - Skeletal Tracking.....	28#
6.5.3 - Cloud Physics Processing.....	28#
7 - DEPLOYMENT OF THE PERVASIVE GAMES PLATFORM.....	29#
7.1 - Client Side Enablers	29#
7.2 - Server Side Enablers with a Shared Instance.....	29#
7.3 - Server Side Enablers with one Instance per Game	30#
7.4 - Enablers on Both Client and Server Side	30#
7.5 - Infrastructure used in the 1st and 2nd Experimentation Cycles	30#
7.5.1 - Technical Infrastructure in Barcelona	30#
7.5.2 - Technical Infrastructure in Zurich	31#
8 - CONCLUSION.....	32#
REFERENCES	33#

LIST OF FIGURES

LIST OF FIGURES

Figure 1 High-level architecture of the Pervasive Games Platform	12#
Figure 2 Architecture of the Pervasive Games Platform including the interaction of SEs with GEs from FI-WARE	13#
Figure 3 Augmented Resistance	23#
Figure 4 Dragon Flight	23#
Figure 5 Skye Wars	23#
Figure 6 ARpix	24#
Figure 7 Spider Game Demo	24#
Figure 8 Star Tours	25#
Figure 9 Deployment sites of Enablers of the Pervasive Games Platform	29#
Figure 10 Barcelona: Technical Infrastructure	31#

ABBREVIATIONS

AR	Augmented Reality
CG	Computer Graphics
API	Application Programming Interface
SE	Specific Enabler
GE	Generic Enabler
FAQ	Frequently Answered Questions
XML3D	Three Dimensional Extensible Markup Language
POI	Point of Interest
GPU	Graphics Processing Unit
FI	Future Internet
FI-PPP	Future Internet – Public Private Partnership
GPS	Global Positioning System

1 - INTRODUCTION

1.1 - Overview

The Pervasive Games Platform is a collection of tools and techniques, designed to enable the creation of Augmented Reality video games and interactive experiences, on mobile devices and the web. This technical portfolio takes advantage of established game development tools, of specific technical contributions (Ficontent Specific Enablers), and generic Future Internet technology (FI-WARE Generic Enablers). A set of assets like 3D characters are provided as well.

This deliverable is mainly an update to D4.2, now describing the second version of the software prototype of the Pervasive Games Platform. Moreover, we further information such as a development roadmap is provided.

Please be aware that this document is generated from the Ficontent Wiki [1]. Thus, the document may sometimes still refer to the Ficontent Wiki. All information in this document is also available online. We suggest to use the online version [2] for an advanced reading experience.

1.2 - Terminology

The following table contains terms, which are used in multiple deliverables. Therefore, we provide their shared definitions to ensure consistency across several documents.

Term	Definition
Application or Application software	Software layered on top of one or several platforms for realizing various useful tasks for end-users
Architecture	A structure of functional elements organized in a given way and presenting well defined interfaces
Capability	The ability of a component to satisfy a requirement
Conceptual Model	A set of view with written description of the organization of the Ficontent infrastructure to offer services
Enabler Software	Module or web service providing well-specified functionality, accessible and usable by application developers through clearly-described APIs (Application Programming Interfaces)
Experiment or Experimentation	Concrete test with actual users of one scenario in one of the experimentation sites in a given time frame
FI-WARE Tools	The tools put in place by FI-WARE to send requests for Generic Enablers are based on a backlog list in the frame of an agile methodology
Functional requirement	Either calculations, technical details, data manipulation, processing or other specific functionality that define what a system is intended to accomplish
Generic Enabler	An enabler realized by the FI-WARE project or its follow-up sustainability project
Platform	A comprehensive combination of technology infrastructure and Generic Enablers as well as Specific Enablers capable to host and to support development of application software
Point of Interest	A POI is a place, an area or a journey (short distance) which are geo-located. For example: a place (a restaurant, etc.), an area: a public garden, a journey (a hiking trail, etc.). A POI has possibly features such as : static features (opening hours,

	address, name description, etc.), dynamic features (price, menu, number of available places, the delay before the next bus, etc.), event features (a beginning and an end)
Scenario	Description of foreseeable interactions of users with one or several applications
Specific Enabler	An enabler realized by the FIcontent project. Specific Enablers may be layered on top of, or otherwise make use of, Generic Enablers. Please refer to the definition of a FIcontent Specific Enabler from deliverable D6.1 Architecture specification [3]
Interface	The connections between domains (or sub domain or functional elements) serving the actor's actions by exchanging information
Interoperability	The capability of two or more networks, devices, applications to exchange and use information
Technology	A standard or industry specification that has the capability of addressing requirements

2 - PERVERSIVE GAMES PLATFORM ARCHITECTURE

The architecture of the Pervasive Games Platform is a set of integrated, modular Enablers designed to aid building Internet-based games connected with the real world. While moving from native to in-browser execution as browser technology develops, we target real-time, low latency, and high performance goals with the Pervasive Games Platform. Moreover, the platform supports new forms of interactive entertainment of three tiers:

- **Tier 1 -- Digital Consumer Products (Toys).** This tier targets augmented-reality games based on toys, fashion, and other physical products. Games will use the product as a known and structured environment/level and include a limited number of networked uses, for storage and toy-to-toy communication.
- **Tier 2 -- Location Based Games.** Here, we target games developed in an installation such as a museum in which connected, cooperative game experiences are used to make the visit more compelling. This tier builds upon the first tier with real-world locations and a greater number of users.
- **Tier 3 -- City Wide Games.** The third tier targets city-wide games in which larger numbers of players interact in unstructured environments. Testing will take place in large-scale experimentation sites such as Zurich, Barcelona and Cologne. This tier is the most challenging as it requires a high degree of mobile connectivity as well as game dynamics implemented in unstructured locations.

The Pervasive Games Platform is accessible for web developers and provides dedicated features to easily create web-based games with well-known and established technologies. In addition to that, the platform takes advantage of the Unity native engine plugin to support professional game developers by allowing them to work with their accustomed tools.

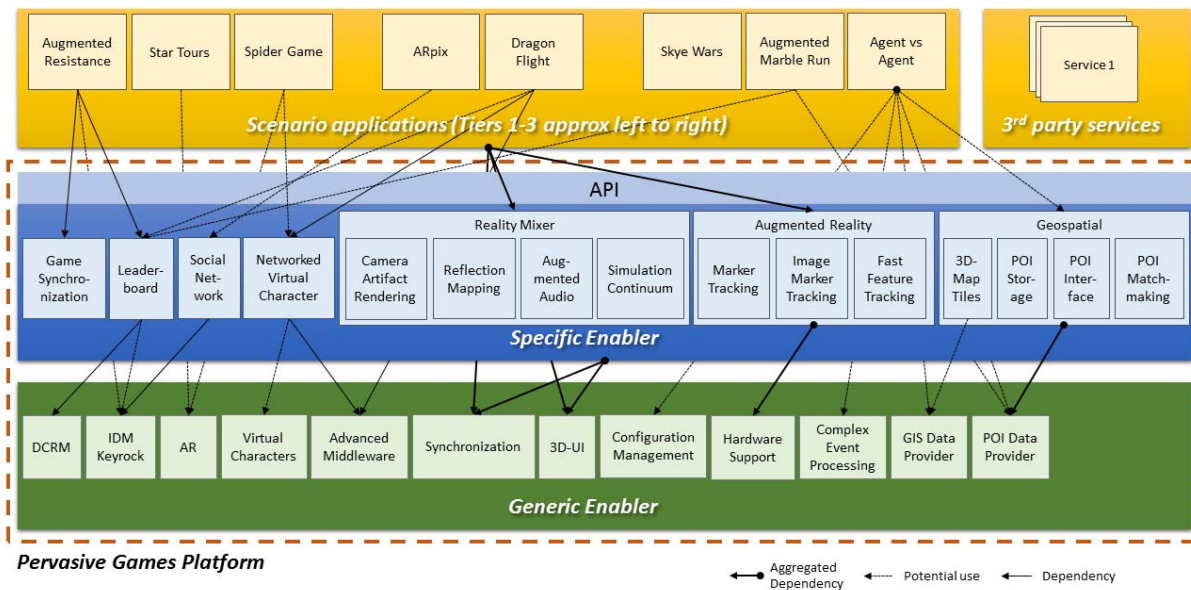


Figure 1 High-level architecture of the Pervasive Games Platform

The Pervasive Games Platform acts as an intermediate layer between the Generic Enablers provided by FI-WARE and the applications built on top of the platform. Further, it exposes the APIs of the Specific Enabler shipped with the platform to the application developers. A selection of applications showcase specific features or Enablers of the platform as illustrated in the figure above. Each application is dedicated to one scenario of the three tiers supported by the Pervasive Games Platform. The scenarios are described in detail in deliverable D4.1.

2.1 - Architecture Description

The core components of the Pervasive Games Platform are shaped by the Specific Enablers dedicated to domain-specific gaming scenarios. Thereby, the platform takes advantage of Generic Enablers from FI-WARE as well as common Specific Enablers developed in FIcontent. All of these Enablers may form groups, as shown in the figure below, and cover a range of features in game development, such as the group Augmented Reality SEs, which provides several tracking methods, or the group of Reality Mixer SEs, which focus on seamless augmented reality applications.

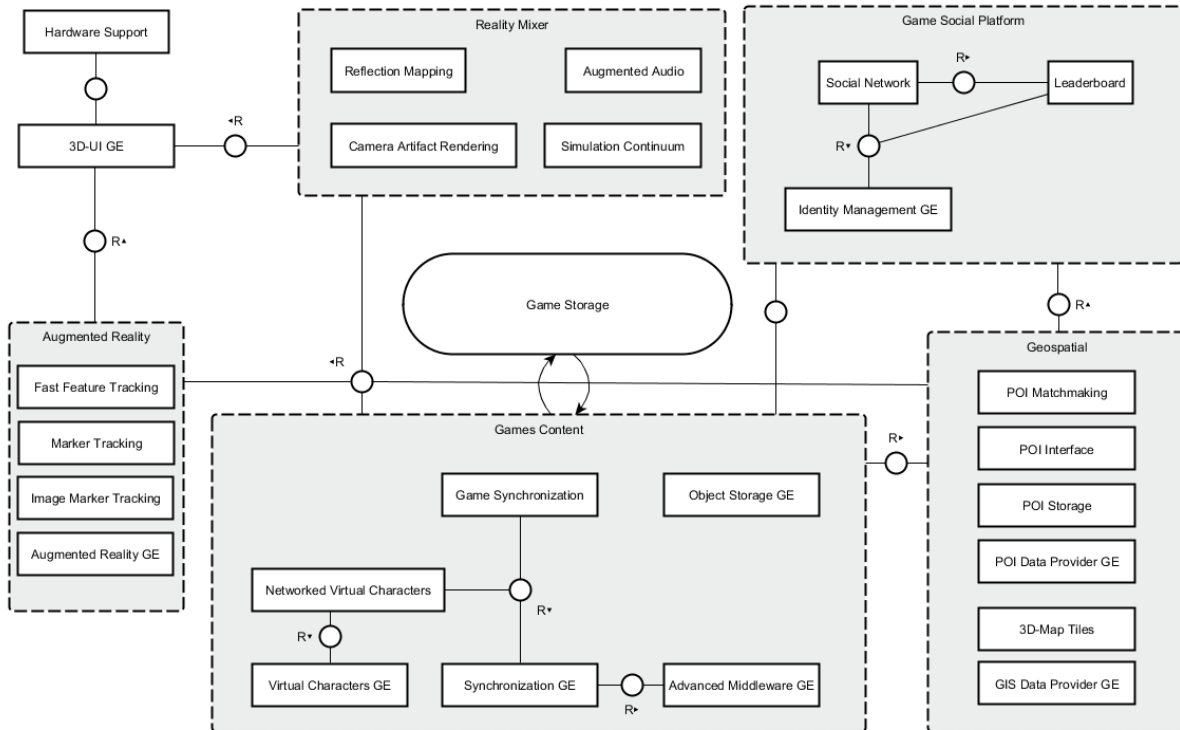


Figure 2 Architecture of the Pervasive Games Platform including the interaction of SEs with GEs from FI-WARE

The following sections describe the main functions provided by each component of the Pervasive Games Platform.

2.1.1 - Augmented Reality

Augmented Reality games break the line between reality and computer generated content by enhancing a real environment. The augmentation of a scene with additional computer generated content requires a very precise estimation of the camera pose. Therefore, we provide different tracking techniques based on the 3D User Interface (3D-UI) GE [4] in order to achieve a fully immersive experience in real-time. In addition to that, we utilize usual positioning methods, such as GPS localization, and provide with the Fast Feature Tracking SE [5] a GPU-accelerated implementation to easily create applications with basic markerless Augmented Reality functionality on today's mobile devices.

2.1.2 - Reality Mixer

A context aware connected interactive experience must focus on the development of methods to integrate and match real or filtered video footage with rendered virtual objects and characters seamlessly. In this way the mobile device acts not as a traditional electronic display, but as a lens onto the real world with transparently aligned augmented reality content.

Moreover, we render augmented reality Computer Graphics (CG) objects that match the artifacts of the device's camera by utilizing the Camera Artifact Rendering SE [6]. Adding synthesized computer images to live action footage, e.g. movie grain, noise, chromatic aberration and providing a reality slider that grades the disparity between video and CG footage achieves a seamless transition for mixed reality applications. In addition to that, stylization and beautification filters applied to both video stream and CG rendered content achieves an artistic goal avoiding the uncanny valley (as employed for example by PIXAR in traditional CG).

Augmented reality experiences further take place with virtual objects placed in the real world. Virtual objects under a physically accurate simulation thus far have no physical effect on real objects and conversely rigid and soft body dynamics captured from real objects have no physically simulated effect in virtual objects. This Enabler group includes methods for achieving a physical Simulation Continuum (see Section 6) between real and virtual objects.

Sound is also common in augmented reality productions. However, sounds are often not located at the correct projected 3D location. Furthermore, these do not account for the environment's aural signature, binaural effects, the influence of the presence of virtual objects and materials as sound reflectors. For these purposes we will provide the Augmented Audio SE (see Section 6).

2.1.3 - Geospatial

The Geospatial - POI Matchmaking SE [7] (formerly Spatial Matchmaking SE) is amended by a new set of Specific Enablers in this second release of the platform. The Geospatial - POI Interface SE [8] adds functionalities that are often needed to access and update POIs from a client side application and the POI Storage SE [9] provides an GE-compliant implementation of a POI webservice. In addition to that, the 3D-Map Tiles SE [10] provides 3D representations of scene ground tiles (e.g. projected maps or satellite images). These two geospatial SEs are common Specific Enablers of FIcontent and demonstrate the integration and sharing of technologies between Smart City Services and in the context of the city-wide gaming (Tier 3).

Moreover, this component incorporates the capabilities of the POI Data Provider GE [11] and GIS Data Provider GE [12] provided by FI-WARE to attach our content to existing objects in real-world environments. This becomes in particular relevant for Tier 3 applications together with the Game Synchronization SE [13].

2.1.4 - Game Social Platform

We utilize social platforms for the Pervasive Games Platform in two ways - one is intended for game developers and the other one for players. For both we take advantage of the Social Network SE [14] in combination with the Identity Management GE [15] from FI-WARE.

The developer portal is a useful place for game developers to find answers or help each other. It provides a starting point to get in contact with the capabilities of the Pervasive Games Platform and to receive information beyond the pure documentation, such as a Wiki including a FAQ section and a forum. Users can rate each other's entries, like tutorials or published games, and send messages using that developer portal. A news section and an optional mailing list will be used to inform about changes and announce new features and Specific Enablers of the Pervasive Games Platform. Standard software will be used for this.

Within the player social platform a dedicated area for each game will be provided including a forum to answer questions of players and to provide support. Ideally, more experienced players will help new players. The Leaderboard SE [16] seamlessly integrates into this platform, showing overall high scores for individual games or levels. Some games may require a group of players, like collaborative or competitive games. Therefore, the Spatial Matchmaking SE [17] connects to the social platform and helps to find nearby teammates.

2.1.5 - Games Content

This component of the platform is designed to provide services to manage the actual content of games. It allows the synchronization of UI and game states between players and devices and offers an efficient API for scene interactions and rendering. Therefore, we take advantage of several Generic Enablers alongside with Specific Enablers for game-domain specific purposes. The storage of game content, such as level data, avatars and assets, will be handled by the Object Storage GE [18] to provide a distributed, robust and scalable storage solution.

The Synchronization GE [19] can be used to create new types of multi-user applications shared between multiple devices and can be combined with the Game Synchronization SE [13] for taking charge of specific synchronization of game states. These Enablers rely on the technologies of the Advanced Middleware GE [20] to update game settings and 3D-scenes in multiplayer scenarios across different platforms.

Moreover, the Networked Virtual Character SE (see Section 6) interacts with the Synchronization GE [19] by exchanging motion data of virtual characters and applying the changes to the scenes. Those services may also rely on the Virtual Characters GE [21] in order to provide animated and controllable characters to interact with the scene.

2.2 - Specific Enablers

We provide the following list of Specific Enablers through the Pervasive Games Platform.

- Reality Mixer - Reflection Mapping SE [22] (Release 09/13)
- Reality Mixer - Camera Artifact Rendering SE [6] (Release 09/13)
- Reality Mixer - Simulation Continuum SE (see Section 6)
- Reality Mixer - Augmented Audio SE (see Section 6)
- Augmented Reality - Marker Tracking SE [23] (Release 09/13)
- Augmented Reality - Fast Feature Tracking SE [5] (Release 09/13)
- Augmented Reality - Image Marker Tracking SE (see Section 6)
- Leaderboard SE [16] (Release 09/13)
- Game Synchronization SE [13] (Release 09/13)
- Networked Virtual Character SE [24] (Release 06/14)
- Geospatial - POI Matchmaking SE [7] (Release 06/14)
- Geospatial - POI Interface SE [8] (Release 06/14)

We utilize the following list of common Specific Enablers for the Pervasive Games Platform.

- Social Network SE [14] (Release 09/13)
- POI Storage SE [9] (Release 06/14)
- 3D-Map Tiles SE [10] (Release 06/14)

2.3 - Generic Enablers

We will take advantage of the following Generic Enablers from FI-WARE within the Pervasive Games Platform. The specifications of some of them are not at the final stage. Thus, the actual functionality or the identifier may differ once the specification of the respective GEs is finalized.

- Object Storage GE [18]
- Augmented Reality GE [25]
- Virtual Characters GE [21]
- Complex Event Processing GE [26]
- Backend Configuration Management Orion GE [27]
- GIS Data Provider GE [12]

We already actively use the following Generic Enablers as part of the Pervasive Games Platform.

- 3D User Interface (3D-UI) GE [4]

- Identity Management GE [15]
- DataCenter Resource Management (DCRM) GE [28]
- Advanced Middleware GE [20]
- Synchronization GE [19]
- POI Data Provider GE [11]

2.4 - External Game Development Tools

One goal of the Pervasive Games Platform is to connect to existing game development tools created by European companies that have been proven in the field and supported by large communities. In the first and second platform releases, we provide connections to:

- Unity3D from **Unity Technologies** (Denmark)
- SmartFoxServer, by **gotoAndPlay()** (Italy)

2.4.1 - Unity3D

Unity3D [29] is a Game Development IDE, that provides a feature-rich Game Engine as well as a production environment for the creation of game scenes and the management of game assets. Unity3D supports JavaScript and C# code. Code and content of the Pervasive Games Platform relevant to Unity3D is distributed in form of unity packages - containers that facilitate the import and export operation between unity users.

The unity assets store is a marketplace for unity packages. Our packages will be uploaded and be available to the whole Unity community. We think this is a powerful distribution mechanism with a large pool of potential users.

2.4.2 - SmartFoxServer

SmartFoxServer [30] is a multi-platform server-client solution for multiplayer games and applications. It provides a rich set of features and extensive documentation, and comes with free and commercial licensing options. In particular, SFS provides functionality to create lobbies where players can chat, create instances of a game and start a playing session.

The server supports extensions for a variety of tasks while utilizing JavaScript and Python as programming languages. The Pervasive Game Platform will provide a number of server extensions to integrate both Specific Enablers and Generic Enablers from the Future Internet technology. SFS instances will run at least in the Zurich experimentation site.

3 - PERVASIVE GAMES PLATFORM - RELEASE 06/14

The previous release of the Pervasive Games Platform focused on Tier 1 gaming scenarios. For tracking, mostly existing image or marker based approaches are used. Supported applications mainly consist of two types that will run on most devices. We concentrate in particular on mobile devices with portability in mind. For these requirements, two foundation technologies suit best: HTML5 and Unity.

Install-free HTML5 web applications. Many mobile devices support nowadays WebGL and therefore, hardware accelerated 2D and 3D graphics. For many users, a dedicated software installation can mean too much effort, but in our case it is enough to just go to a website.

Unity 3D based games for high performance and quick development. For gamers that are willing to install the Unity player software, games can be a bit more sophisticated. For game development and content creation a useful tool exists that is already used by many game developers. A game can be easily deployed to multiple operating systems.

The main contribution of this release is the introduction of the Geospatial group of Enablers. These Enablers deal with the use of geospatial information, such as geo-referenced objects, GPS-based localization of handheld devices and content related to specific POIs, within the Pervasive Games Platform. This group targets in particular tier 3 applications of the platform, i.e. city-wide games and large-scale interactive applications. In addition to that, there was some progress on the animation of virtual characters in large-scale virtual worlds and further improvements on several already existing Specific Enablers.

The following Specific Enablers are included in the June release of the Pervasive Games Platform and provide the technological foundation for our gaming scenarios.

3.1 - Networked Virtual Character [NEW]

3.1.1 - What you get

The animation of virtual characters is a usual task in game development. Regardless of the way how to animate the virtual character, it is desired to synchronize the sequence of motions across multiple clients. Therefore, the Networked Virtual Character (NVC) SE is provided as a plugin to the Synchronization GE and thereby extends its synchronization capabilities to virtual characters while supporting a variety of cross-platform clients.

3.1.2 - Why to get it

The NVC SE provides an easy and convenient way to synchronize motion of virtual characters in games and large-scale virtual environments. It seamlessly integrates with the Synchronization GE from FI-WARE and amends it with the necessary feature set. Moreover, the NVC SE is not limited to human-like virtual characters as it is flexible and extensible to support also animals like spiders.

3.1.3 - Documentation

- Technical Documentation of the Networked Virtual Character SE [24]

3.2 - Geospatial - POI Interface [NEW]

3.2.1 - What you get

City-wide games relies heavily on the geographic location of the player and points of interests of a city. Therefore a smooth cross platform integration the POI Data Provider GE is required. The POI Interface SE provides a simple interface to this problem, implementing methods to both add, search and retrieve points of interest.

3.2.2 - Why to get it

Instead of having to handle HTTP requests manually. The POI Interface SE provides a C# object oriented approach to the POI data structure. This eases the access to the POI Data Provider GE outside the javascript and more json oriented platforms. This SE is completely Unity ready but can also be used outside the Unity environment.

3.2.3 - Documentation

- Technical Documentation of the POI Interface SE [8]

3.3 - Geospatial - POI Matchmaking [NEW]

3.3.1 - What you get

POI Matchmaking is an extension of the Spatial Matchmaking SE, originally in the 09/13 release. This enabler allows to group players based on their spatial proximity to POI.

Players connect to the POI Matchmaking when they and say that they are available and looking to be matched with someone. Upon registration, the service looks for good matches currently available at the near POIs. Custom criteria can be used to filter and rank the results. If no valid session exists, the player is placed in a queue to wait for a match to arrive.

3.3.2 - Why to get it

The POI Matchmaking provides a straight forward implementation to create networked sessions between groups of clients which are physically located near POI. These could be people in a square, in a restaurant, at the bus stop, etc. The system is made for volatile sessions in mind, where clients may disconnect and new clients may join later.

3.3.3 - Documentation

- Technical Documentation of the POI Matchmaking SE [7]
- Tutorials and Example Code for the POI Matchmaking SE [31]

3.4 - Reality Mixer - Reflection Mapping

3.4.1 - What you get

All visual oriented Specific Enablers of the Reality Mixer group measure camera properties and adapt the virtual objects to visually fit to the camera image background. The Reflection Mapping SE utilizes a light probe to extract a sphere map from the camera image, which contains the environmental lighting conditions. This sphere map will be used to apply an appropriate lighting model to rendered virtual objects. Thus, the additional virtual objects are incorporated into the resulting image in a very seamless fashion leading to a more realistic experience of mixed reality applications.

3.4.2 - Why to get it

This enables a new level of realism in augmented reality applications. It may be used directly with a diffuse light probe to match the appearance of matt surfaces on virtual characters and vehicles. Furthermore, developers may experiment with mapping different materials to application objects, such as marble or crystal.

3.4.3 - Documentation

- Technical Documentation of the Reflection Mapping SE [22]
- Developer Guide of the Reflection Mapping SE [32]

3.5 - Reality Mixer - Camera Artifact Rendering

3.5.1 - What you get

This SE helps to render plausible virtual objects on top of a camera image. It consists of two steps which are executed on the client side, e.g. a mobile device. First, some camera parameters are estimated, such as noise, motion and white balance. This can be based on images or other sensor information of the device. The second step is to apply those parameters as a post processing fragment shader pass to the rendered virtual objects.

3.5.2 - Why to get it

This SE helps making the virtual objects more believable and fit seamlessly to the camera image in the background. When the camera imperfections such as color casts, motion blur or noise are not taken into account, the virtual objects will stand out and not look like belonging to the scene. This SE estimates such parameters from the live image and other sensors and applies a post processing step to the virtual objects.

3.5.3 - Documentation

- Technical Documentation of the Camera Artifact Rendering SE [6]
- Developer Guide of the Camera Artifact Rendering SE [33]

3.6 - Leaderboard

3.6.1 - What you get

The leaderboard is a high score list for a game. You can submit an integer score together with the player information, usually after a game is over. To compare the score with the score of other players, you can retrieve an ordered list of scores and respective players. For large lists you can also only get a part of the list. In addition you can query the position of a player on the high score list. Multiple scores can be used, such as 'collected items', 'time' and 'overall score'.

3.6.2 - Why to get it

A simple interface makes it convenient to use. Internally, the Identity Management GE will be used. With a leaderboard the players can be motivated to improve their skills and competitively compare their results with the results of their friends.

3.6.3 - Documentation

- Technical Documentation of the Leaderboard SE [16]
- Tutorials and Example Code for the Leaderboard SE [34]

3.7 - Augmented Reality - Fast Feature Tracking

3.7.1 - What you get

All Specific Enablers of the Augmented Reality group provide various tracking methods to enable augmented reality applications. The Fast Feature Tracking SE learns targets by color, then matches the center of the color area (for example a colored football) in the camera image to retrieve the relative camera pose information. This extends an application with the capabilities to apply the matching transformation to 3D-scene content and render them onto respective targets.

3.7.2 - Why to get it

With the Fast Feature Tracking SE you will be able to easily create applications with basic markerless augmented reality functionality. With this Specific Enabler you can learn the color of targets on the fly in an

application and then track the center and size of the target for camera relative placement of animated interactive graphics such as virtual characters or vehicles.

3.7.3 - Documentation

- Technical Documentation of the Fast Feature Tracking SE [5]

3.8 - Augmented Reality - Marker Tracking

3.8.1 - What you get

All Specific Enablers of the Augmented Reality group provide various tracking methods to enable augmented reality applications. The Marker Tracking SE utilizes AR markers to retrieve camera pose information through XML3D/Xflow. This extends XML3D with the capabilities to apply the matching transformation to 3D-scene content and render them onto respective markers in a web-based environment. The Marker Tracking SE follows the declarative approach of XML3D and is real-time capable.

3.8.2 - Why to get it

With the Marker Tracking SE you will be able to easily create web applications with basic augmented reality functionality. The Specific Enabler nicely captures all the necessary computations into Xflow operators of XML3D. Thus, you can create AR application without being an expert in computer vision. Basic knowledge in web technologies is sufficient to produce great applications using XML3D together with the Marker Tracking SE.

3.8.3 - Documentation

- Technical Documentation of the Marker Tracking SE [23]

3.9 - Game Synchronization

3.9.1 - What you get

This enabler provides functionality to synchronize the game world. We consider the following taxonomy. For the connection of the parties, we consider Peer-to-peer (p2p) and Server-to-Client (s2c). This enabler serves different networking models, such as:

- RTS-lockstep (p2p) - [*September 2013*].
- Authoritarian Client (p2p), also known as 'Host' model - [*November 2013*].
- Authoritarian Server (s2c) - [*November 2013*].

The RTS-lockstep is intended for games with a large game state that would be hard to synchronize over the network. This is indeed the case of RTS games with many units. In the peer-to-peer scenario, after a hand shaking phase (see the use of SmartFoxServer) the network is only used to transfer the players' input, and the game simulation is done locally on each client. Both Authoritarian solutions are intended for games where the game-state has a manageable size, and can be transferred over the network. The authority (either a client or a dedicated server) will act as authority and simulate the game, sending the updated game-state to the clients. Clients send back the player input.

3.9.2 - Why to get it

Synchronization of game content is often game specific. As a developer, one has to choose the networking model, and often invest resources in crafting something that fits the particular needs. The choice of using this enabler depends on the complexity and requirement of your game, as well as your resources.

With this enabler, we focused on two classic paradigms, peer-to-peer and server-to-client, with the intent to build a base for developers to build upon. This enabler provides a working base that can be extended to the specific needs without having to start from scratch.

3.9.3 - Documentation

- Technical Documentation of the Game Synchronization SE [13]
- Tutorials and Example Code for the Game Synchronization SE [35]

3.10 - 3D-Map Tiles [NEW]

3.10.1 - What you get

The 3D-Map Tiles SE supplies in an OpenStreetMap-like manner map tiles of the ground. These tiles are a 3D representation of the scene ground in contrast to usual image tiles of OSM. Moreover, the 3D-Map Tiles SE supports different backend data providers to offer different kinds of tiles, such as projected OSM-tiles and laser-scanned elevation data with textures. Therefore, the 3D-Map Tiles SE incorporates the GIS-DP GE from FI-WARE.

3.10.2 - Why to get it

When moving from traditional 2D-map applications towards geo-referenced interactive 3D-applications, a representation of the environmental ground (i.e. terrain) is needed. The 3D-Map Tiles SE addresses this requirement in a flexible approach and easy-to-use way for web-based application. It seamlessly incorporates with the 3D-UI GE from FI-WARE and thereby preserves full control over rendering to the client application.

3.10.3 - Documentation

- Technical Documentation of the 3D-Map Tiles SE [10]

3.11 - POI Storage [NEW]

3.11.1 - What you get

The POI Storage SE provides a flexible, lightweight webservice to store POI-related data. Furthermore, it is a GE-compliant implementation of the POI-DP GE from FI-WARE and amends the use of this GE with additional features, such as storing and retrieving of custom data components, importing sample data (e.g. geonames.org), and daisy chaining of POI-DP instances.

3.11.2 - Why to get it

Realizing geo-referenced applications often relies on POIs. The POI Storage SE enables these type of applications to store and retrieve POI-related data. Due to the support of custom data components, it nicely fits any kind of application requirements while maintaining compatibility with POI-DP GE to interface other public well-established POI data sources.

3.11.3 - Documentation

- Technical Documentation of the POI Storage SE [9]

3.12 - Social Network

3.12.1 - What you get

The Social Network SE is a federated social network. It features user and profile management and the ability of creating status updates, uploading assets (text, pictures, etc.) and social functions (liking, commenting, etc.) with real-time updates to your peer group (i.e. followers).

3.12.2 - Why to get it

The Social Network SE is one way of 'glueing' the different enablers and components into a full-fledged social network. Users of these components can communicate, share, comment and like assets. This is especially relevant if the business model and the use cases of the SME services needs a community and the management thereof.

3.12.3 - Documentation

- Technical Documentation of the Social Network SE [14]

4 - PERVASIVE GAMES PLATFORM APPLICATION PROTOTYPES

A number of example applications were developed using the Pervasive Games Platform. They are described in more detail in D7.1.2 and D7.6.1. Unlike described in the DoW, there is no single application using all SEs, as it turned out that the use cases are too different. Instead, these following applications showcase the usage of all tier 1 and tier 2 SEs of the Pervasive Games Platform.

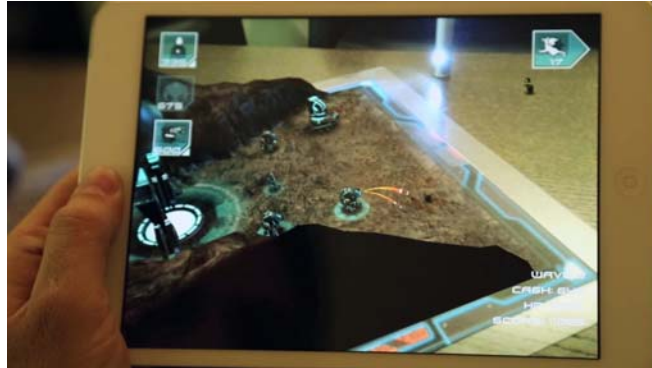


Figure 3 Augmented Resistance

Augmented Resistance



Figure 4 Dragon Flight

Dragon Flight



Figure 5 Skye Wars

SkyeWars



Figure 6 ARpix

ARpix

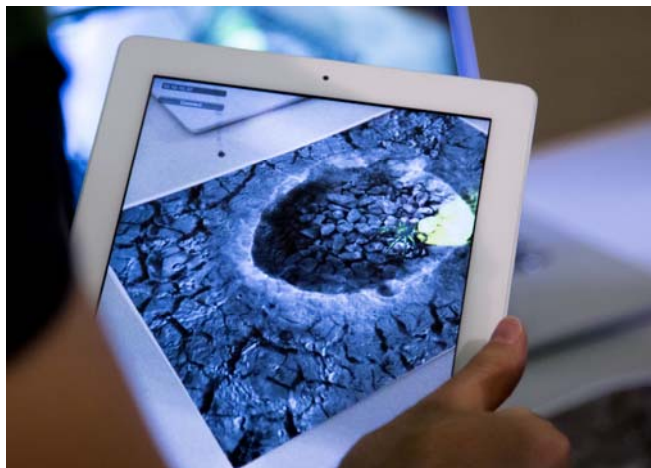


Figure 7 Spider Game Demo

Spider Game Demo

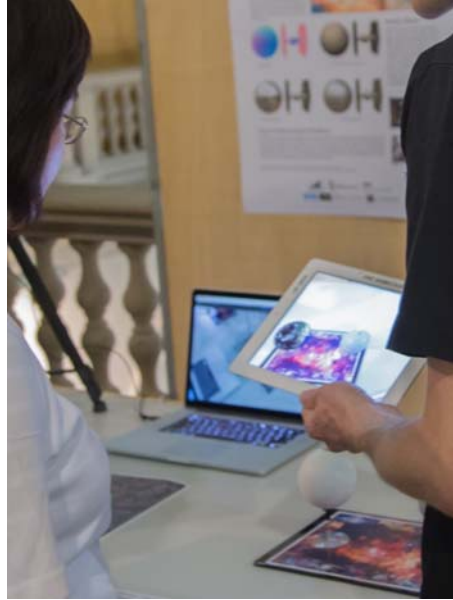


Figure 8 Star Tours

Star Tours

Further sample applications for the tier 3 SEs are planned.

5 - INTERACTION AND COOPERATION WITH OTHERS FICONTENT PLATFORMS

With regard to the effort in platform development, there is an overlap between the Social Connected TV (WP2), Smart City (WP3) and Pervasive Games (WP4) Platform. In particular relevant for city-wide games, for instance, might be the cooperation with work package 3. We address these synergies in various fashions:

Common Specific Enablers. First of all, we promoted certain Specific Enablers, such as the Social Network SE [14], as Common Specific Enabler of Ficontent due to the fact, that multiple platforms take advantage of them. For example, the social platform module of the Pervasive Games Platform utilizes the Social Network SE as well as the Smart City Platform (WP3) as described in D3.2. Thereby, both benefit from the user interaction abilities of the Social Network SE including sharing of contents such as media, status, and comments.

Technology Transfer. Moreover, we develop groups of Specific Enablers within WP4, such as the Augmented Reality SEs and Reality Mixer SEs, dedicated for gaming in the first place, but probably useful as well for advanced interaction techniques in the context of Smart City Services. Hence, we will push selected pieces of technology from WP4 either directly to WP3 or even promote certain SEs as Common Specific Enablers too. Our Augmented Reality group of SEs contains promising candidates for the latter approach. Therefore, we cooperate with WP3 on the requirements for these SEs and align the development of feature with gaming scenarios in mind as well as POI use cases, for instance.

FI-PPP Architecture Board. In addition, we maintain a strong connection between the technical work package WP6 and partners of the Pervasive Games Platform to strengthen in particular the link between the technology providers and game-domain related parties, and through WP6 to the whole FI-PPP in general due to the active engagement of WP6 in the FI-PPP Architecture Board.

Finally, few partners, which are driving the technological platform development and being involved in multiple work packages, act as bridge with regard to common requirements and sharing efforts between those work packages.

6 - PERVASIVE GAMES PLATFORM - UPCOMING RELEASES

For the upcoming releases of the Pervasive Games Platform we will shift our focus to Tier 2 and Tier 3 gaming scenarios. Therefore, we will extend the portfolio of Specific Enablers of the Pervasive Games Platform and add dedicated Enablers to handle these scenarios. Moreover, we will improve our existing Specific Enablers with additional features, performance improvements and alternative implementations. We may introduce new Enablers based on existing ones to provide a more advanced feature set.

The following Specific Enablers are planned for upcoming releases of the Pervasive Games Platform and will amend the technological foundation for our Tier 2 and Tier 3 gaming scenarios.

6.1 - Reality Mixer - Augmented Audio

Sound effects add another level of immersion to games. By taking the acoustic properties of the environment into account, the sound will feel more integrated and less artificial. Especially reflections (echo) are important. Without a direct line of sight, the spectrum of the sound is attenuated non-linearly. With binaural sound we might even add a convincing sense of direction of the sounds.

6.2 - Augmented Reality - Image Marker Tracking

All Specific Enablers of the Augmented Reality group provide various tracking methods to enable augmented reality applications. The Image Marker Tracking SE utilizes natural features of suitable images as markers to retrieve camera pose information through XML3D/Xflow. This extends XML3D with the capabilities to apply the matching transformation to 3D-scene content and render them onto respective marker images in a web-based environment.

6.3 - Reality Mixer - Simulation Continuum

Augmented reality experiences further take place with virtual objects placed in the real world. Virtual objects under a physically accurate simulation thus far have no physical effect on real objects and conversely rigid and soft body dynamics captured from real objects have no physically simulated effect in virtual objects. This enabler includes development of methods for achieving a simulation continuum between real and virtual objects.

6.4 - New SEs and new prototypes by Open Call partners

The deliverables D4.4.2, D4.4.3 and D4.4.4 will describe the additional APIs and functionality provided by the new partners:

- D4.4.2 will provide details on the SLAMflex SE for 3D tracking and the ARTool SE for simpler AR application development and deployment.
- D4.4.3 will provide details on the PHENOME 3D-character engine integration into Unity 3D.
- D4.4.4 will provide details on the TTS text-to-speech SEs.

6.5 - Other Previously Planned Enablers

A number of planned Specific Enablers were postponed or will not be implemented, as the scenarios and the feasibility of the planned Tier 3 games is now clearer and the expertise from the new partners is known.

6.5.1 - Game Server

This enabler was planned as simplified abstraction to the SmartFoxServer service. This is a platform for networked games available for most of the existing game engine platforms. It targets developers for a large number of regular game players and turned out to be less suitable for our scenarios than originally expected. At the moment we do not plan to add an SE as an abstraction to this tool.

6.5.2 - Augmented Reality - Skeletal Tracking

For Tier 1 game scenarios it is useful to track the position and orientation of a toy. This SE was planned to go one step further by recovering the pose of the toy such as the angles of arms and legs with respect to the body or the head rotation. This functionality is still an open research problem and cannot be addressed with reasonable effort by the existing or new partners. In addition, the new Vuforia version of Qualcomm now offers 3D object tracking which partially solves this problem.

6.5.3 - Cloud Physics Processing

Physics simulations can be demanding in terms of computation power, memory and power consumption. On mobile devices only simple simulations are feasible. With this SE it was planned to offload the computation to a server. While we plan to implement a sample application with this idea, no suitable abstraction was found to package the requirements in an API for a general use case.

7 - DEPLOYMENT OF THE PERSVASIVE GAMES PLATFORM

The figure below illustrates where the Enablers are located, i.e. where they are installed and running. On the left side the cloud services are listed that mostly have a RESTful API to be used by clients or other services. The right side shows Enablers that are running purely on the client side. The center contains Enablers that simplify the interface and need to run code both on the client and server side.

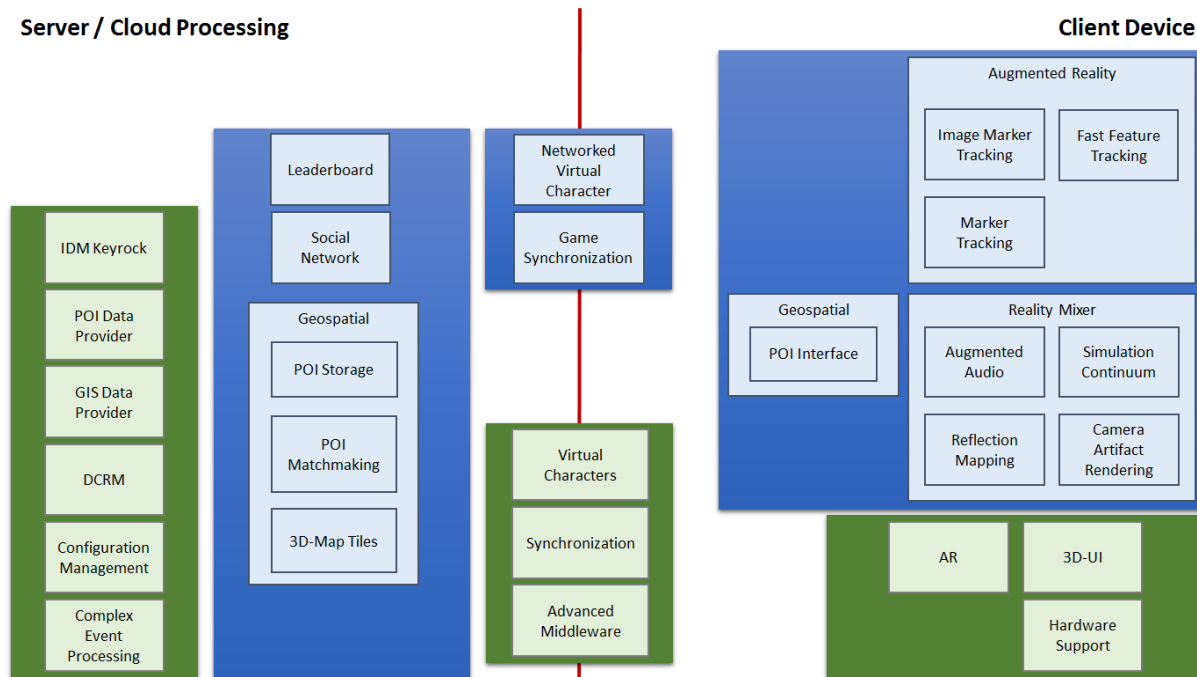


Figure 9 Deployment sites of Enablers of the Pervasive Games Platform

7.1 - Client Side Enablers

Some Specific Enablers of the Game Platform are purely located on the client side. They consist of libraries, installation packages or standalone applications. Download links will be provided via the FIcontent catalogue ('where to get') but the files will be hosted usually by each responsible partner to allow for easy updates.

Such Enablers are:

- Reality Mixer - Reflection Mapping SE (see Section 3.4)
- Reality Mixer - Simulation Continuum SE (see Section 6)
- Reality Mixer - Augmented Audio SE (see Section 6)
- Reality Mixer - Camera Artifact Rendering SE (see Section 3.5)
- Augmented Reality - Image Marker Tracking SE (see Section 6)
- Augmented Reality - Fast Feature Tracking SE (see Section 3.7)
- Augmented Reality - Marker Tracking SE (see Section 3.8)
- Geospatial - POI Interface SE (see Section 3.2)
- 3D User Interface GE [4]
- Augmented Reality GE [25]

7.2 - Server Side Enablers with a Shared Instance

Some Specific Enablers and Generic Enablers that have either little performance requirements and are used by several games or SEs and GEs, which are intended to share data among several games, will use single instances. They will be deployed once and used by a number of games. These Enablers are:

- Identity Management GE [15]

- Social Network SE [36]
- 3D-Map Tiles SE [37]
- POI Storage SE [38]
- Geospatial - POI Matchmaking SE (see Section 3.3)
- Configuration Management GE [39]
- Data Center Resource Management GE [40]
- Complex Event Processing GE [26]

7.3 - Server Side Enablers with one Instance per Game

Some Specific Enablers are cloud services and have to be deployed per game by the game developer. Thanks to the Thales PaaS this will be as simple as a few clicks in the administration panel. Usually, such instances also require database access. These databases can be setup with the same interface and are also created per game. These Enablers are:

- Leaderboard SE (see Section 3.6)
- Game Server SE (see Section 6)
- POI Data Provider GE [11]
- GIS Data Provider GE [12]

For most Cloud Based (server side) enablers we will use the XIFI FI-LAB testbed infrastructure and the PaaS from Thales. The latter will greatly simplify deployment and administration by automatic scaling and health monitoring. Three notable exceptions exist where dedicated servers might be used at the respective test sites:

- latency-critical message handling for multi user games such as racing or first person shooter type games
- ethical requirements to store private data within the same country as the test site
- GPU computing power for high performance physical simulations if not available on cloud servers

For these cases, the experimentation sites provide a server infrastructure, supporting local experiments during the two experimentation cycles.

7.4 - Enablers on Both Client and Server Side

Some Enablers are located at the interface between client and server and, therefore, consist of both a server side cloud service as well as a library part which is used on the client. The enablers are:

- Advanced Middleware GE [20]
- Synchronization GE [19]
- Virtual Characters GE [21]
- Game Synchronization SE (see Section 3.9)
- Networked Virtual Character SE (see Section 3.1)

7.5 - Infrastructure used in the 1st and 2nd Experimentation Cycles

The Pervasive Games Platform is deployed on two of FIcontent's six experimentation sites: Barcelona and Zurich. The following sections briefly describe the available infrastructure at both experimentation sites, which are described in more detail in deliverables of WP7 (see D7.1.2, D7.5.1, D7.6.1).

7.5.1 - Technical Infrastructure in Barcelona

Regarding the technical infrastructure used in the Barcelona Experimentation site, i2Cat has connected different venues to run the FIcontent experiments: PMT in Castelldefels [41], Citilab in Cornellà [42], Neapolis in Vilanova [43] and Fabra & Coats in Barcelona [44] as main hub of activities.

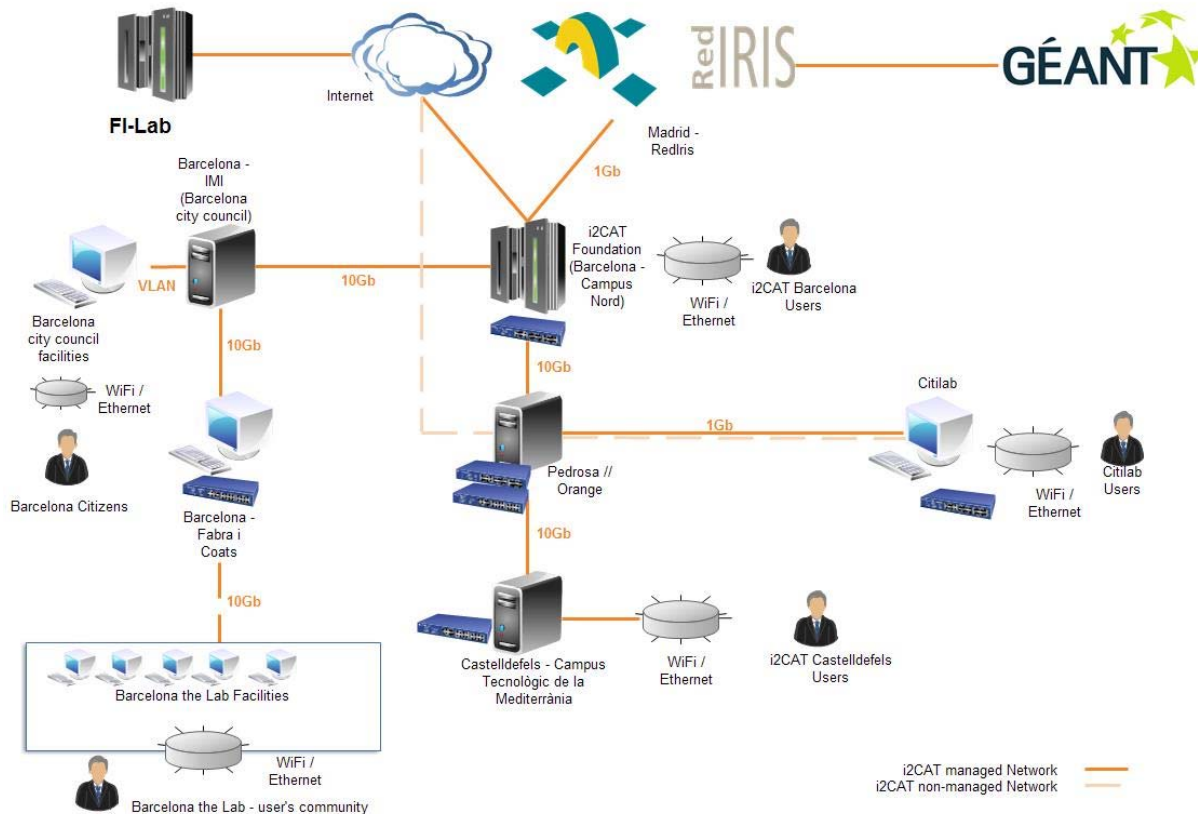


Figure 10 Barcelona: Technical Infrastructure

The connectivity of the Barcelona site to the external world, and to FI-Lab in particular, is provided by a 10GE link to FIRE facilities through I2CAT and Barcelona Municipality fiber optic network.

The Barcelona experimentation site can also count on an extensive hosting and networking infrastructure through MediaCAT’s hardware facilities, fully owned and operated by I2CAT. Located in the C4 building of the Mediterranean Technology Park (Castelldefels, Barcelona), the MediaCAT CPD has 10 racks with 9 power lines (three triphasic lines) fully dedicated to hosting:

- 3 lines connected to the university’s uninterruptible power system (backup electric generator).
- 3 lines per equipment distributed in the communication and services racks
- 3 lines dedicated to cluster servers and storage racks

MediaCAT’s hosting capabilities are currently supported by:

- 90 hardware servers that host both services and virtual servers based on VMware or Xen.
- 14 Switches 10/1Gbps dedicated network
- 7 storage boxes.
- Different network testbeds including a Juniper MX480 router.
- Other equipment such as video conference, DWDM ...

7.5.2 - Technical Infrastructure in Zurich

The current technical infrastructure consists of a dozen of mobile devices, i.e. tablets and phones, as well as the infrastructure offered by ETH Zurich (wifi, rooms, open areas where to run experiments). At the moment Zurich is using the cloud hosting provided by FI-LAB which is sufficient for the current needs of the Pervasive Games Platform. Virtual servers can be rented from ETH on demand, allowing to reduce latency for some time critical synchronization of real time games.

8 - CONCLUSION

In this document, we have presented a technical description of the Pervasive Games Platform, ready for the 2nd Experimentation Cycle. First, we have presented the overall architecture of the platform, listing the groups of Specific Enablers and Generic Enablers that are involved, as well as how they interact with each other. In addition, we have indicated the external development tools that are currently integrated in the platform and how this integration works.

Second, we have presented the development roadmap, including a description of what will be available in the second platform release and in upcoming releases. This includes a high-level description of the Specific Enablers provided by the partners behind the Pervasive Games Platform. For a detailed description of Specific Enablers, please refer to Fcontent Wiki. Description of FI-WARE GEs is available in the FI-WARE catalogue.

Finally, we have discussed the deployment of the platform and pointed out the diversity of environments hosting the utilized enablers between client devices and server instances together with technical infrastructure used for the second experimentation cycle in Barcelona and Zurich.

REFERENCES

- [1] <http://wiki.mediafi.org/>
- [2] <http://wiki.mediafi.org/doku.php/ficontent.deliverables.d44>
- [3] http://wiki.mediafi.org/doku.php/ficontent.deliverables.d61#definition_of_a_ficontent_specific_enabler
- [4] http://wiki.mediafi.org/doku.php/ficontent.fiware.ge_usage#d_user_interface_3d-ui_ge
- [5] <http://wiki.mediafi.org/doku.php/ficontent.gaming.enabler.augmentedreality.fastfeaturetracking>
- [6] <http://wiki.mediafi.org/doku.php/ficontent.gaming.enabler.realitymixer.cameraartifactrendering>
- [7] <http://wiki.mediafi.org/doku.php/ficontent.gaming.enabler.geospatial.poimatchmaking>
- [8] <http://wiki.mediafi.org/doku.php/ficontent.gaming.enabler.geospatial.poiinterface>
- [9] <http://wiki.mediafi.org/doku.php/ficontent.common.enabler.poistorage>
- [10] <http://wiki.mediafi.org/doku.php/ficontent.common.enabler.3dmaptiles>
- [11] http://wiki.mediafi.org/doku.php/ficontent.fiware.ge_usage#poi_data_provider_ge
- [12] http://wiki.mediafi.org/doku.php/ficontent.fiware.ge_usage#gis_data_provider_ge
- [13] <http://wiki.mediafi.org/doku.php/ficontent.gaming.enabler.gamesynchronization>
- [14] <http://wiki.mediafi.org/doku.php/ficontent.common.enabler.socialnetwork>
- [15] http://wiki.mediafi.org/doku.php/ficontent.fiware.ge_usage#identity_management_ge
- [16] <http://wiki.mediafi.org/doku.php/ficontent.gaming.enabler.leaderboard>
- [17] <http://wiki.mediafi.org/doku.php/ficontent.gaming.enabler.spatialmatchmaking>
- [18] http://wiki.mediafi.org/doku.php/ficontent.fiware.ge_usage#object_storage_ge
- [19] http://wiki.mediafi.org/doku.php/ficontent.fiware.ge_usage#synchronization_ge
- [20] http://wiki.mediafi.org/doku.php/ficontent.fiware.ge_usage#advanced_middleware_ge
- [21] http://wiki.mediafi.org/doku.php/ficontent.fiware.ge_usage#virtual_characters_ge
- [22] <http://wiki.mediafi.org/doku.php/ficontent.gaming.enabler.realitymixer.reflectionmapping>
- [23] <http://wiki.mediafi.org/doku.php/ficontent.gaming.enabler.augmentedreality.markertracking>
- [24] <http://wiki.mediafi.org/doku.php/ficontent.gaming.enabler.networkedvirtualcharacter>
- [25] http://wiki.mediafi.org/doku.php/ficontent.fiware.ge_usage#augmented_reality_ge
- [26] http://wiki.mediafi.org/doku.php/ficontent.fiware.ge_usage#complex_event_processing_ge
- [27] http://wiki.mediafi.org/doku.php/ficontent.fiware.ge_usage#backend_configuration_management_orion_ge
- [28] http://wiki.mediafi.org/doku.php/ficontent.fiware.ge_usage#datacenter_resource_management_dcrm_ge
- [29] <http://unity3d.com/>
- [30] <http://www.smartfoxserver.com/>
- [31] <http://wiki.mediafi.org/doku.php/ficontent.gaming.enabler.geospatial.poimatchmaking.developerguide>
- [32] <http://wiki.mediafi.org/doku.php/ficontent.gaming.enabler.realitymixer.reflectionmapping.developerguide>

- [33] <http://wiki.mediafi.org/doku.php/ficontent.gaming.enabler.realitymixer.cameraartifactrendering.developerguide>
- [34] <http://wiki.mediafi.org/doku.php/ficontent.gaming.enabler.leaderboard.developerguide>
- [35] <http://wiki.mediafi.org/doku.php/ficontent.gaming.enabler.gamesynchronization.developerguide>
- [36] http://wiki.mediafi.org/doku.php/ficontent.common.roadmap.release_06_14#social_network
- [37] http://wiki.mediafi.org/doku.php/ficontent.common.roadmap.release_06_14#d-map_tiles_new
- [38] http://wiki.mediafi.org/doku.php/ficontent.common.roadmap.release_06_14#poi_storage_new
- [39] http://wiki.mediafi.org/doku.php/ficontent.firmware.ge_usage#configuration_management_ge
- [40] http://wiki.mediafi.org/doku.php/ficontent.firmware.ge_usage#data_center_resource_management_ge
- [41] <http://www.pmt.es/>
- [42] <http://citilab.eu/>
- [43] <http://www.neapolis.cat/es>
- [44] <http://fabraicoats.bcn.cat/es>